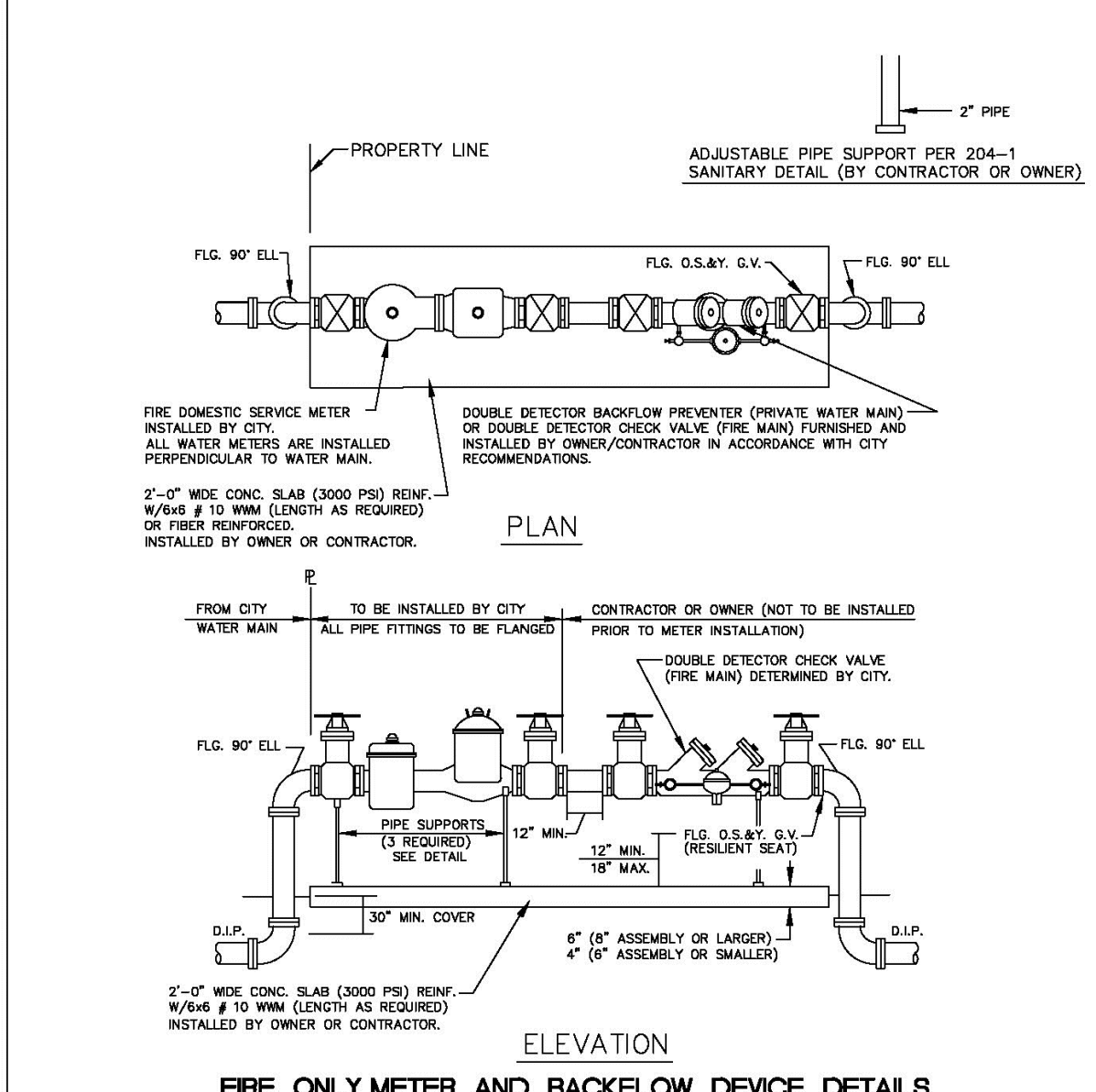


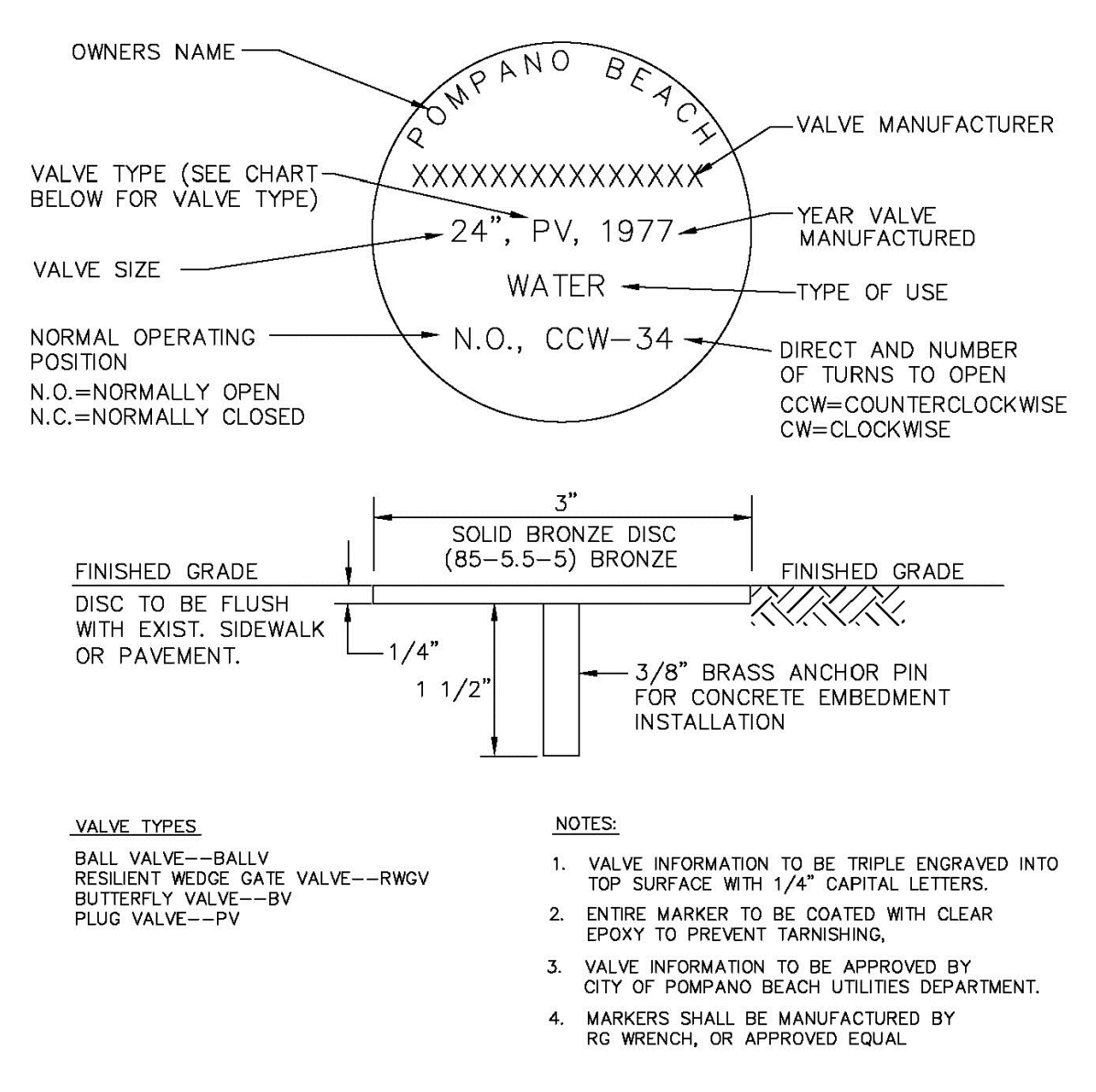
### VALVE BOX SETTINGS

ENGINEERING STANDARDS 2025			
REVISIONS		ENGINEERING DIVISION CITY OF POMPAÑO BEACH	VALVE BOX SETTINGS
BY	DATE		
S.S.	04-2005		
		SCALE: N.T.S.	
			DATE: MAY 2022 DWG. NO. 102-1



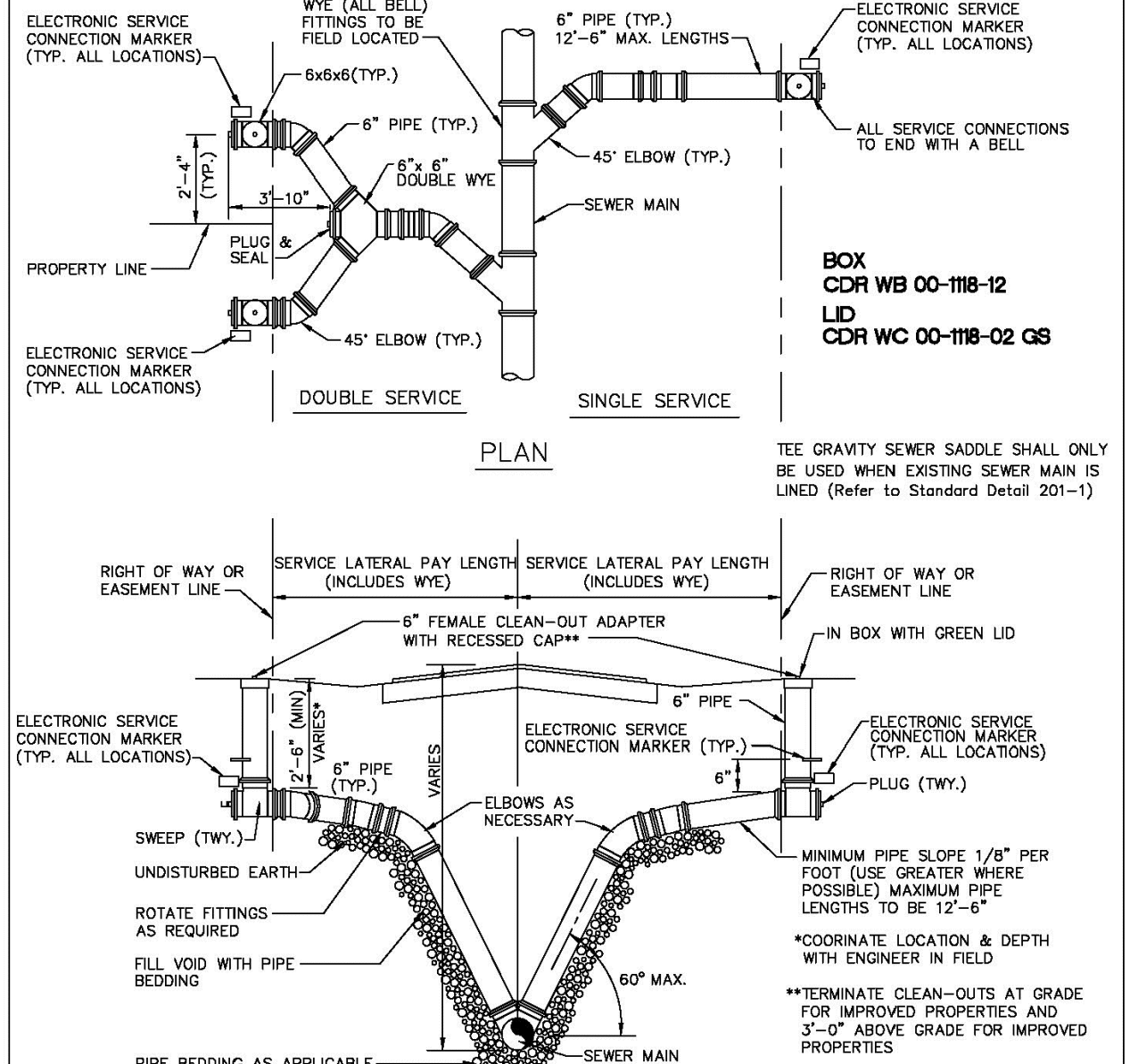
### FIRE ONLY METER AND BACKFLOW DEVICE DETAILS

ENGINEERING STANDARDS 2025			
REVISIONS		ENGINEERING DIVISION CITY OF POMPAÑO BEACH	FIRE ONLY METER AND BACKFLOW DEVICE
BY	DATE		
S.S.	05-2011		
S.S.	11-2012		
S.S.	12-2013		
S.S.	11-2016	SCALE: N.T.S.	
			DATE: MAY 2022 DWG. NO. 106-3



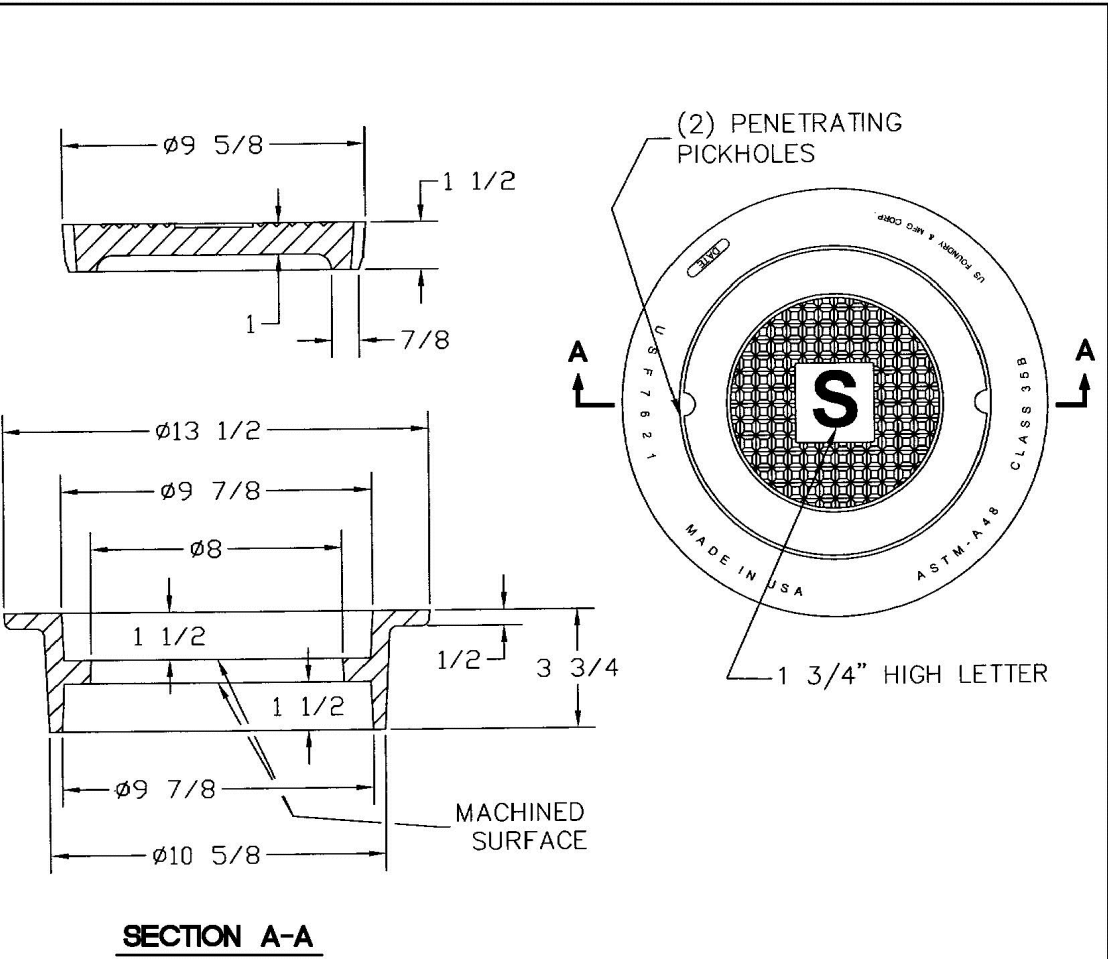
### UNDERGROUND VALVE IDENTIFICATION MARKER

ENGINEERING STANDARDS 2025			
REVISIONS		ENGINEERING DIVISION CITY OF POMPAÑO BEACH	UNDERGROUND VALVE IDENTIFICATION MARKER
BY	DATE		
S.S.	JUNE 2000		
T.W.	11-2007		
T.W.	02-2008		
S.S.	1-24-12	SCALE: N.T.S.	
			DATE: FEB. 2022 DWG. NO. 115-1



### SERVICE LATERALS WITH RISERS

ENGINEERING STANDARDS 2025			
REVISIONS		ENGINEERING DIVISION CITY OF POMPAÑO BEACH	SERVICE LATERALS
BY	DATE		
T.W.	11-2007		
S.S.	01/27/12		
S.S.	07/10/12		
S.S.	02/05/16	SCALE: N.T.S.	
			DATE: JUNE 2022 DWG. NO. 200-1

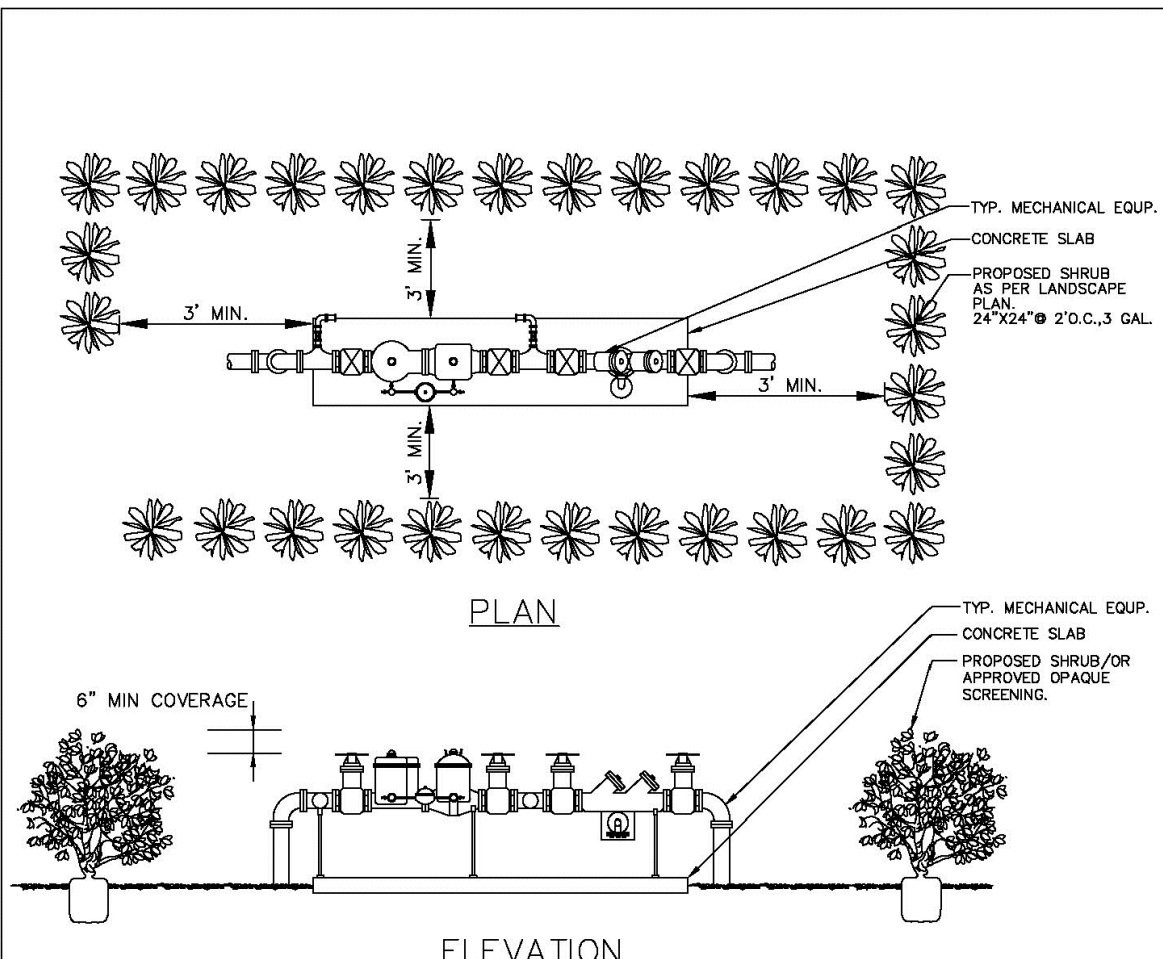


### SECTION A-A

NOTE  
MATERIAL: Gray Cast Iron  
ASTM-A48 Class 35B

### SEWER BOX AND COVER - HEAVY TRAFFIC

ENGINEERING STANDARDS 2025			
REVISIONS		ENGINEERING DIVISION CITY OF POMPAÑO BEACH	SEWER BOX AND COVER HEAVY TRAFFIC
BY	DATE		
S.S.	12/06/16		
		SCALE: N.T.S.	
			DATE: JUNE 2022 DWG. NO. 210-3

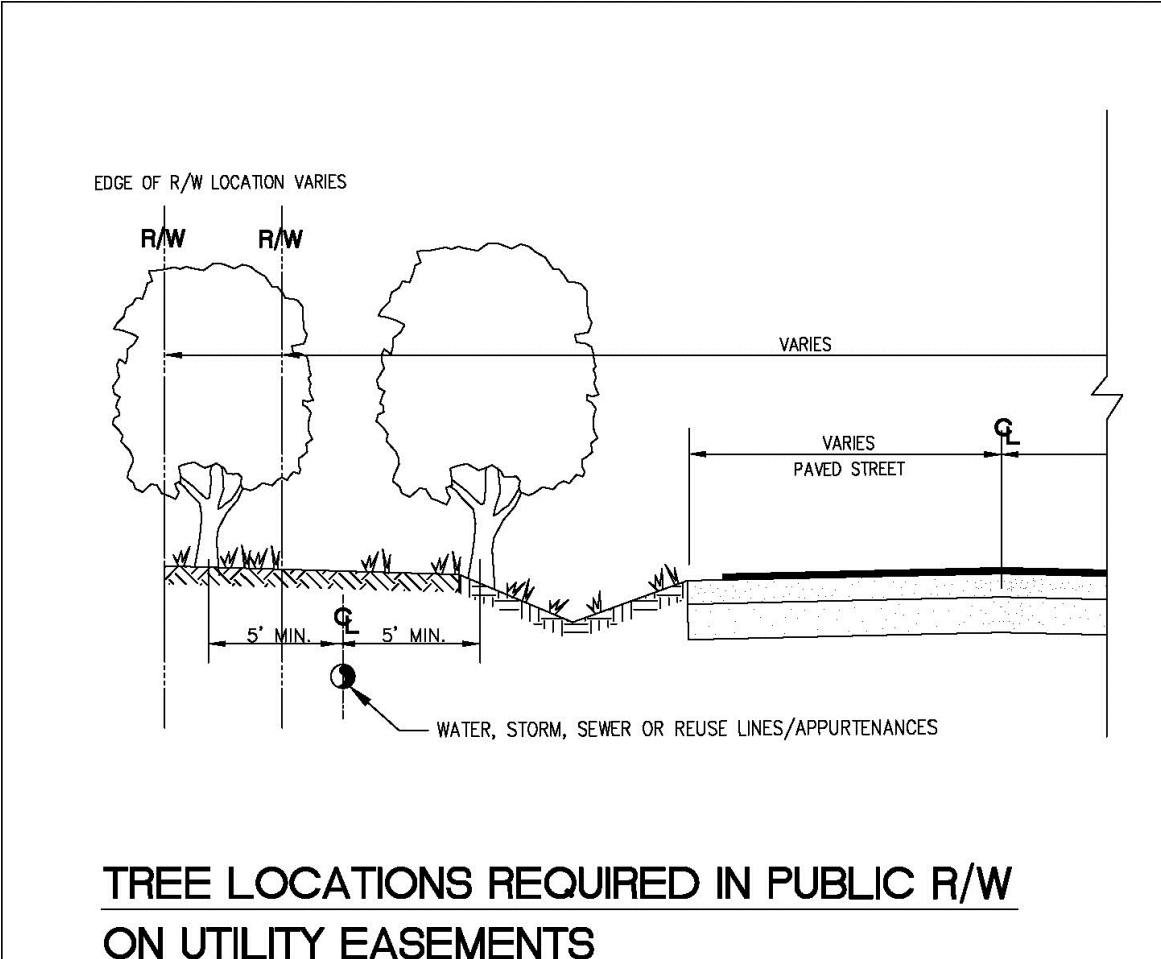


### ELEVATION

### TYPICAL SCREEN FOR UTILITIES

NOTES  
PLEASE NOTE THAT AS PER CITY ORDINANCE(S) 50.02(A) (4) AND 100.35(E), STREET TREES SHALL NOT BE PLACED ON TOP OF OR 5' OF EITHER SIDE OF ANY CITY OWNED UTILITY INFRASTRUCTURE. ALSO, PLEASE NOTE THAT NO TREES SHRUBBERY OR OBSTRUCTION SHALL BE PLACED WITHIN A 3' RADIUS OF A CITY OWNED LATERAL CLEANOUT OR WATER & OR REUSE METER.

ENGINEERING STANDARDS 2025			
REVISIONS		ENGINEERING DIVISION CITY OF POMPAÑO BEACH	TYPICAL SCREEN FOR UTILITIES
BY	DATE		
TOW	APRIL 2010		
		SCALE: N.T.S.	
			APPROVED BY: DATE: MAY 2022 DWG. NO. 315-1



### TREE LOCATIONS REQUIRED IN PUBLIC R/W ON UTILITY EASEMENTS

NOTES  
PLEASE NOTE THAT AS PER CITY ORDINANCE(S) 50.02(A) (4) AND 100.35(E), STREET TREES SHALL NOT BE PLACED ON TOP OF OR 5' OF EITHER SIDE OF ANY CITY OWNED UTILITY INFRASTRUCTURE. ALSO, PLEASE NOTE THAT NO TREES SHRUBBERY OR OBSTRUCTION SHALL BE PLACED WITHIN A 3' RADIUS OF A CITY OWNED LATERAL CLEANOUT OR WATER & OR REUSE METER.

ENGINEERING STANDARDS 2025			
REVISIONS		ENGINEERING DIVISION CITY OF POMPAÑO BEACH	REQUIRED TREE LOCATIONS
BY	DATE		
		SCALE: N.T.S.	
			APPROVED BY: DATE: MAY 2022 DWG. NO. 316-1

### REVISIONS

REV	DATE	COMMENT	DRAWN BY

Call 811 or visit sunshine811.com two full business days before digging to have buried facilities located and marked.  
Check positive response codes before you dig!

### ISSUED FOR MUNICIPAL & AGENCY REVIEW & APPROVAL

THIS DRAWING IS INTENDED FOR MUNICIPAL AND/OR AGENCY REVIEW AND APPROVAL. IT IS NOT INTENDED AS A CONSTRUCTION DOCUMENT UNLESS INDICATED OTHERWISE.

PROJECT No.: FLE240130.00-0A  
DRAWN BY: AC  
CHECKED BY: AS  
DATE: 12/30/2024  
CAD ID: P-CIVL-CNDS

PROJECT:

### PROP. SITE PLAN DOCUMENTS FOR

### POMPAÑO PICKLE, LLC

PROPOSED DEVELOPMENT

210-217 NE 3RD STREET  
POMPAÑO BEACH, FL  
BROWARD COUNTY

1900 NW CORPORATE BOULEVARD  
SUITE 101E  
BOCA RATON, FLORIDA 33431  
Phone: (561) 571-0280  
Fax: (561) 571-0281  
FLORIDA BUSINESS CERT. OF AUTH. No. 30780

SHEET TITLE:

### CONSTRUCTION DETAILS

SHEET NUMBER:

C-902

ORG. DATE - 12/30/2024